

Diese Zeichnung ist Eigentum der
Fa. Grasl GmbH A-3454 Reidling, Europastra 1
Die Weiterverwendung oder Vervielflti-
gung ohne unser schriftliches Einver-
stndnis ist verboten!

Description of function:

The hand lever valve HH5/2 is a 5/2 way piston slide valve for manual controlling the RWA- or ventilation cylinder OPEN / CLOSE. The valve can be controlled electric OPEN / CLOSE by electro add-on components (EA / EZ), whereby a add-on component can have optionally also priority over the other (EAV / EZV). There is no manual operating possible as long as a add-on component is activated.

Operation:

- 1.) Manual operation by using the hand lever.
hand lever up = OPEN
hand lever down = CLOSE
- 2.) Electric operation by applying the rated voltage to the electromagnet of the add-on component.

Installation:

- 1.) Variable mounting position
- 2.) Join connenctions as follows:
P ... Compressed air
A ... Pneumatic cylinder OPEN
B ... Pneumatic cylinder CLOSE

Technical data:

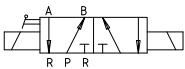
max. operating pressure	10bar
min. operating pressure by EA/EZ	3bar
min. operating pressure by EAV/EZV	2bar
nominal width of valve	4mm
ambient temperature range	-15°C - +55°C

Electro add-on components:

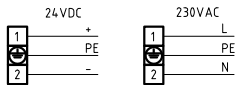
EA24electric OPEN 24VDC
EAV24 electric PRIORITY OPEN 24VDC
EA230electric OPEN 230V
EAV230 electric PRIORITY OPEN 230V

EZ24 electric CLOSE 24VDC
EZV24 electric PRIORITY CLOSE 24VDC
EZ230 electric CLOSE 230V
EZV230electric PRIORITY CLOSE 230V

Pneumatic symbol:



Connecting diagram electromagnet:



Power input - attracting - DC	-
Power input - attracting - AC	9 VA
Power input - holding - DC	5W
Power input - holding - AC	6VA

Ordering example:

HH5/2 - EAV24 - EZ230

GRASL Pneumatic-Mechanik GmbH A-3454 Reidling Europastraße 1				Freimaßtoleranz nach DIN 7168:				Maßstab: 1:1		Werkstoff:		
								ID - Nr.:				
					Datum	Name		Bezeichnung: Data sheet Hand lever valve HH 5/2 with electro add-on component OPEN/CLOSE				
				Bear.	25.08.2009	Simetzberger						
				Gepr.	29.05.2012	KW						
				Norm								
								Zeichnung Nr.: 04.007.DAT.02.02-E				Blatt
02	VdS Anerkenn., Temp.	21.05.2012	SA	Type: HH 5/2								
01	Text	14.02.2011	SA					BL				
Zus.	Änderung	Datum	Name	(Urspr.)		(Ers.f.)		04.007.DAT.02.01		(Ers.d.)		