

Diese Zeichnung ist Eigentum der
Fa. Grasl GmbH A-3454 Reidling, Europastra 1
Die Weiterverwendung oder Vervielflti-
gung ohne unser schriftliches Einver-
stndnis ist verboten!

Description of function:

The hand lever valve HH5/2 is a 5/2 way piston slide valve for manual controlling the RWA- or ventilation cylinder OPEN / CLOSE. The valve can be controlled pneumatic OPEN / CLOSE by pneumatic add-on components (PA / PZ), whereby a add-on component can have optionally also priority over the other (PAV / PZV). There is no manual operating possible as long as a add-on component is activated.

Operation:

- 1.) Manual operation by using the hand lever.
hand lever up = OPEN
hand lever down = CLOSE
- 2.) Pneumatic operation by applying the min. release pressure on PA(PAV) / PZ(PZV).

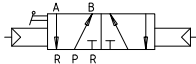
Installation:

- 1.) Variable mounting position
- 2.) Join connections as follows:
P Compressed air
A Pneumatic cylinder OPEN
B Pneumatic cylinder CLOSE
PA / PAV Pneumatic remote control: VENTILATION OPEN
PZ / PZV Pneumatic remote control: VENTILATION CLOSE

Technical data:

max. operating pressure	16bar
min. release pressure by PA/PZ	3bar
min. release pressure by PAV/PZV	2bar
nominal width of valve	4mm
ambient temperature range	-15°C - +55°C

Pneumatic symbol:



Ordering example:

HH5/2 - PA - PZ

GRASL Pneumatic-Mechanik GmbH A-3454 Reidling Europastraße 1				Freimaßtoleranz nach DIN 7168:				Maßstab: 1:1		Werkstoff:		
								ID - Nr.:				
					Datum	Name		Bezeichnung: Data sheet Hand lever valve HH 5/2 with pneumatic add-on component OPEN/CLOSE				
				Bear.	25.08.2009	Simetzberger						
				Gepr.	29.05.2012	KW						
				Norm								
				Type:			Zeichnung Nr.:				Blatt	
02	VdS Anerkenn., Temp.		21.05.2012	SA	HH 5/2			04.007.DAT.04.02-E				BL.
01	Text		14.02.2011	SA								
Zus.		Änderung	Datum	Name	(Urspr.)			(Ers.f.) 04.007.DAT.04.01		(Ers.d.)		