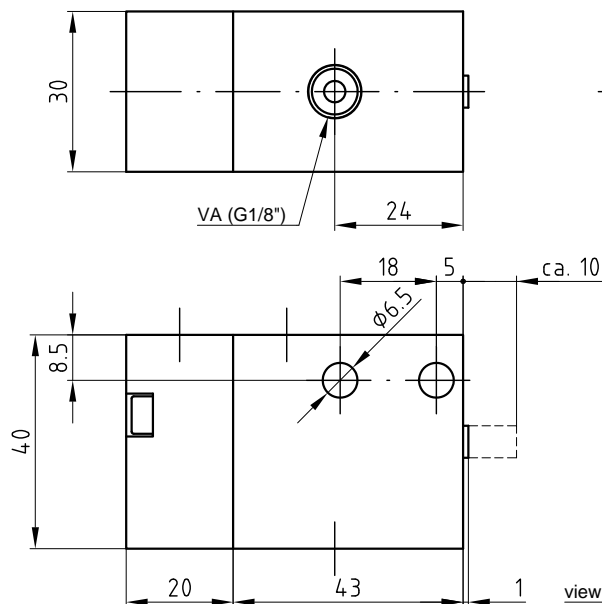
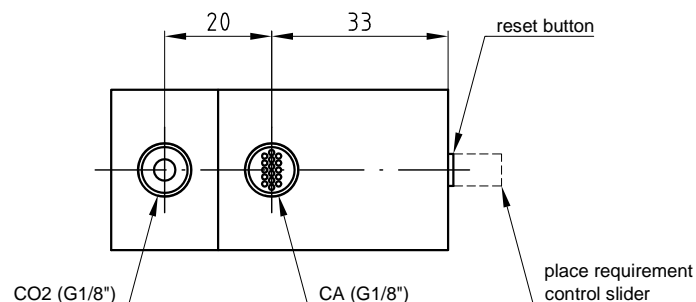
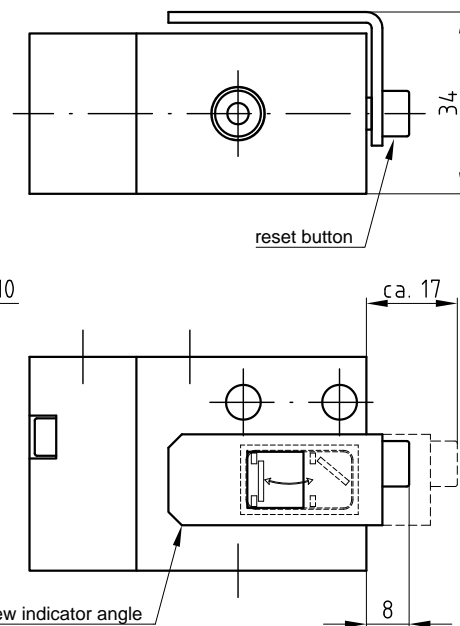


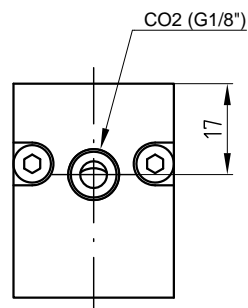
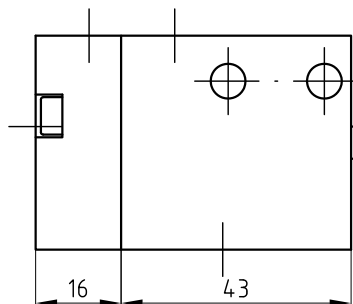
VVE CO2-input at the top:



VVE CO2-input xxx - SA:



VVE CO2-input on the side:



Description of function:

In normal state (view indicator angle and reset button in drawn position (i.e. "ZU" is visibly)) is a connecting between VA and CA. When control the priority valve single-pipe over the CO2-input, the connections CO2 and CA are connected. The connection VA will be closed off and the view indicator angle shows "AUF". CO2 has always priority compared to the connection VA.

Releasing:

Pneumatic releasing via applying the min. control pressure at connection CO2

Mounting:

- Connections:
CA outlet OPEN
VA input OPEN
CO2priority connection OPEN
- Variable mounting position. Make sure that the required place for the control slider is available.
- For our 1/8" connection threads we recommend to use screw connections with taper thread and to seal these in position using a liquid sealant (e.g. Loctite 243). It must be ensured that the liquid sealant is applied to the external thread.

Commissioning:

- Deeply press reset button in the correct position. In normal state the reset button stick out approx. 1mm of the housing (resp. 8mm with view indicator angle)
- After releasing, repeat process

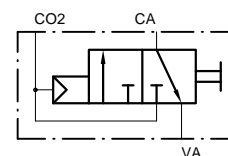
Technical data:

max. operating pressure (connections CO2-A, CO2-Z, CA, CZ)	60bar
max. operating pressure (connections VA, VZ)	16bar
min. control pressure for CO2-connection	4bar
nominal width of valve	4mm
ambient temperature range	-25°C - +80°C (2h 110°C)
VdS approval no.	G590014

Scope of supply:

Screw connections are NOT included in the scope of supply!

Circuit diagramm:



Ordering versions:

- VVE CO2-Eingang oben
- VVE-SA CO2-Eingang oben
- VVE CO2-Eingang seitlich
- VVE-SA CO2-Eingang seitlich

Tolerance	Scale	1:1	Material	
Created Simetzberger	Sheet 1/2	Format A3	Title Priority valve single-pipe VVE / VVE-SA	Document Style Data sheet
Approved GH	Issue Date 09.12.2015			Document State Valid
Grasl				Document Number 04.026.DAT.03.02-E
Pneumatic Mechanik GmbH	QM FO 05.24.0			