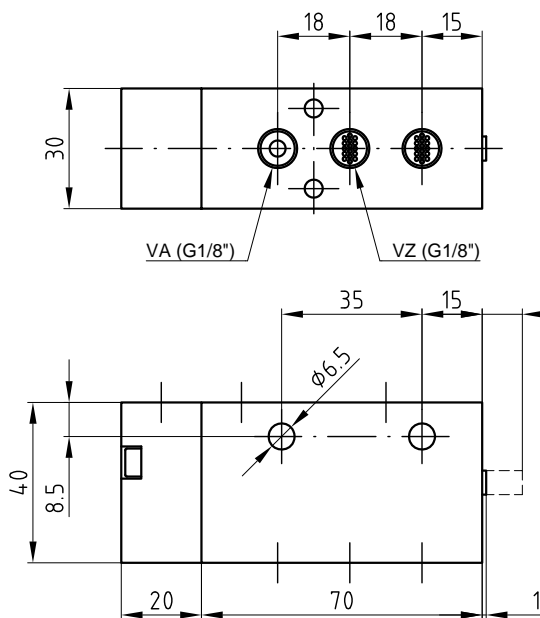
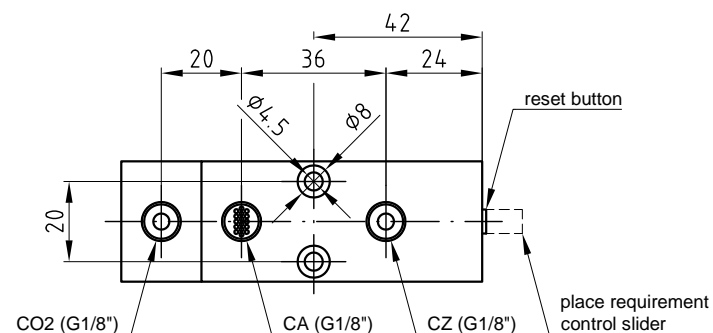
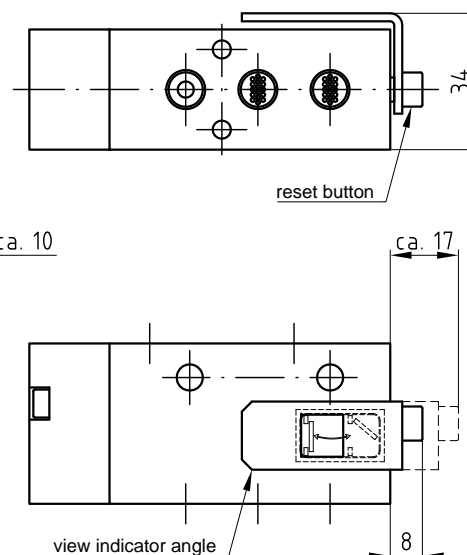


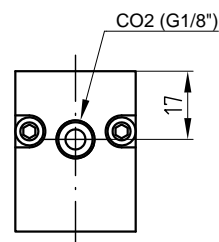
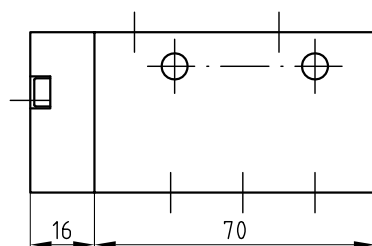
### VVZ CO2-input at the top:



### VVZ CO2-input xxx - SA:



### VVZ CO2-input on the side:



### Description of function:

In normal state (view indicator angle and reset button in drawn position (i.e. "ZU" is visibly)) is a connecting between VA and CA as well between VZ and CZ. When control the priority valve double-pipe over the CO2-input, the connections CO2 and CA are connected and the connection CZ is exhaust. The connections VA and VZ will be closed off and the view indicator angle shows "AUF". CO2 has always priority compared to the connections VA and VZ.

### Releasing:

Pneumatic releasing via applying the min. control pressure at connection CO2

### Mounting:

#### 1) Connections:

CA ..... outlet OPEN  
CZ ..... outlet CLOSE  
VA ..... input OPEN  
VZ .....input ZU  
CO2 .....priority connection OPEN

#### 2) Variable mounting position. Make sure that the required place for the control slider is available.

3) For our 1/8" connection threads we recommend to use screw connections with taper thread and to seal these in position using a liquid sealant (e.g. Loctite 243). It must be ensured that the liquid sealant is applied to the external thread.

### Commissioning:

1) Deeply press reset button in the correct position. In normal state the reset button stick out approx. 1mm of the housing (resp. 8mm with view indicator angle).

2) After releasing, repeat process.

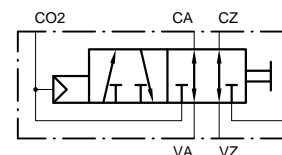
### Technical data:

max. operating pressure (connections CO2, CA, CZ)	60bar
max. operating pressure (connections VA, VZ)	16bar
min. control pressure for CO2-connection	4bar
nominal width of valve	4mm
ambient temperature range	-25°C - +80°C (2h 110°C)
VdS approval no.	G590014

### Scope of supply:

Screw connections are NOT included in the scope of supply!

### Circuit diagramm:



### Ordering versions:

- VVZ CO2-Eingang oben
- VVZ-SA CO2-Eingang oben
- VVZ CO2-Eingang seitlich
- VVZ-SA CO2-Eingang seitlich

Tolerance	Scale	3:4	Material	
Created Simetzberger	Sheet 1/2	Format A3	Title Priority valve double-pipe VVZ / VVZ-SA	Document Style Data sheet
Approved GH	Issue Date 09.12.2015			Document State Valid
Grasl				Document Number 04.020.DAT.00.02-E
Pneumatic Mechanik GmbH	QM FO 05.24.0			