

Diese Zeichnung ist Eigentum der
Fa. Grasl GmbH A-3454 Reidling, Europastra 1
Die Weiterverwendung oder Vervielflti-
gung ohne unser schriftliches Einver-
stndnis ist verboten!

Description of function:

The hand lever valve HH5/2 is a 5/2 way piston slide valve with mounted priority valve VVZ for manual controlling the RWA- or ventilation cylinder OPEN / CLOSE.

If there is a pressure on the connection CO2 which is higher than the min. release pressure, the priority valve VVZ switch, connect the input CO2 with the output CA and exhaust the connection CZ at the same time.
All ventilation operations are disable as long as the connection CO2 isn't exhausted and the priority valve will be reseted with the reset button.

Operation:

- 1.) Manual operation by using the hand lever.
hand lever up = OPEN
hand lever down = CLOSE
- 2.) Pneumatic operation PRIORITY OPEN by applying the minimum release pressure on CO2.

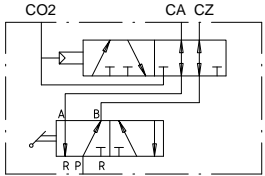
Installation:

- 1.) Variable mounting position
- 2.) Join connections as follows:
PCompressed air
CA Pneumatic cylinder OPEN
CZ Pneumatic cylinder CLOSE
CO2 ...Pneumatic remote control: PRIORITY OPEN

Technical data:

max. operating pressure	16bar
min. release pressure by CO2	4bar
nominal width of valve	4mm
ambient temperature range	-15°C - +55°C

Pneumatic symbol:



Ordering example:

HH5/2 - VVZ

GRASL Pneumatic-Mechanik GmbH A-3454 Reidling Europastraße 1				Freimaßtoleranz nach DIN 7168:		Maßstab: 1:1		Werkstoff:	
						ID - Nr.:			
						Datum		Name	
				Bear:		31.08.2009		Simetzberger	
				Gepr.:		29.05.2012		KW	
				Norm					
				Type:		HH 5/2 - VVZ		Zeichnung Nr.:	
02		VdS Anerkenn., Temp.		21.05.2012		SA		Blatt	
01		Schriftkopf Englisch		14.02.2011		SA		04.007.DAT.05.02-E	
								BL.	
Zus.		Änderung		Datum		Name		(Urspr.)	
								(Ers.f.) 04.007.DAT.05.01	
								(Ers.d.)	