

Diese Zeichnung ist Eigentum der  
Fa. Grasl GmbH A-3454 Reidling, EuropastraÙ 1  
Die Weiterverwendung oder Vervielfälti-  
gung ohne unser schriftliches Einver-  
ständnis ist verboten!

### Description of function:

The hand lever valve HH5/2 is a 5/2 way piston slide valve with mounted priority valve VVZ for manual controlling the RWA- or ventilation cylinder OPEN / CLOSE. The valve can be controlled electric OPEN / CLOSE by electro add-on components (EA / EZ), whereby a add-on component can have optionally also priority over the other (EAV / EZV). There is no manual operating possible as long as a add-on component is activated .

If there is a pressure on the connection CO2 which is higher than the min. release pressure, the priority valve VVZ switch, connect the input CO2 with the output CA and exhaust the connection CZ at the same time.

All ventilation operations are disable as long as the connection CO2 isn't exhausted and the priority valve will be reseted with the reset button.

### Operation:

- 1.) Manual operation by using the hand lever.  
hand lever up = OPEN  
hand lever down = CLOSE
- 2.) Electric operation by applying the rated voltage to the electromagnet of the add-on component.
- 3.) Pneumatic operation PRIORITY OPEN by applying the minimum release pressure on CO2.

### Installation:

- 1.) Variable mounting position
- 2.) Join connenctions as follows:  
P ..... Compressed air  
CA ..... Pneumatic cylinder OPEN  
CZ .....Pneumatic cylinder CLOSE  
CO2 ..... Pneumatic remote control: PRIORITY OPEN

### Technical data:

max. operating pressure	10bar
min. operating pressure by EA/EZ	3bar
min. operating pressure by EAV/EZV	2bar
min. release pressure by CO2	4bar
nominal width of valve	4mm
ambient temperature range	-15°C - +55°C

### Electro add-on components:

EA24 .....electric OPEN 24VDC  
EAV24 ..... electric PRIORITY OPEN 24VDC  
EA230 .....electric OPEN 230V  
EAV230 ..... electric PRIORITY OPEN 230V

EZ24 ..... electric CLOSE 24VDC  
EZV24 ..... electric PRIORITY CLOSE 24VDC  
EZ230 ..... electric CLOSE 230V  
EZV230 .....electric PRIORITY CLOSE 230V

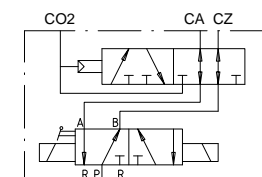
### Connecting diagram electromagnet:

	24VDC	230VAC
1	+	L
2	-	N
3	PE	PE
4	-	N

Power input - attracting - DC	-
Power input - attracting - AC	9 VA
Power input - holding - DC	5W
Power input - holding - AC	6VA

### Pneumatic symbol:



### Ordering example:

HH5/2 - VVZ - EAV24 - EZ230

GRASL Pneumatic-Mechanik GmbH A-3454 Reidling, EuropastraÙ 1				FreimaÙtoleranz nach DIN 7168:		MaÙstab: 1:1		Werkstoff:	
						ID - Nr.:			
				Datum		Name		Bezeichnung:	
				Bear.		31.08.2009		Simetzberger	
				Gepr.		29.05.2012		KW	
				Norm					
				Type:		HH 5/2 - VVZ		Zeichnung Nr.:	
								04.007.DAT.07.02-E	
				Zus.		Änderung		Datum	
								Name	
								(Urspr.)	
								(Ers.f.)	
								04.007.DAT.07.01	
								(Ers.d.)	