

Diese Zeichnung ist Eigentum der
Fa. Grasl GmbH A-3454 Reidling, Europastra 1
Die Weiterverwendung oder Vervielflti-
gung ohne unser schriftliches Einver-
stndnis ist verboten!

Description of function:

The hand lever valve HH5/2 is a 5/2 way piston slide valve with mounted priority valve VVZ for manual controlling the RWA- or ventilation cylinder OPEN / CLOSE. The valve can be controlled electric CLOSE by an electro add-on component (e.g. by a wind and rain control). There is no manual operating possible as long as the add-on component is activated.

If there is a pressure on the connection CO2 which is higher than the min. release pressure, the priority valve VVZ switch, connect the input CO2 with the output CA and exhaust the connection CZ at the same time. All ventilation operations are disable as long as the connection CO2 isn't exhausted and the priority valve will be reset with the reset button.

Operation:

- Manual operation by using the hand lever.
hand lever up = OPEN
hand lever down = CLOSE
- Electric operation by applying the rated voltage to the electromagnet of the add-on component.
- Pneumatic operation PRIORITY OPEN by applying the minimum release pressure on CO2.

Installation:

- Variable mounting position
- Join connections as follows:
P Compressed air
CA Pneumatic cylinder OPEN
CZ Pneumatic cylinder CLOSE
CO2 Pneumatic remote control: PRIORITY OPEN

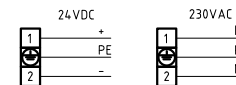
Technical data:

max. operating pressure	10bar
min. operating pressure by EZ	2bar
min. release pressure by CO2	4bar
nominal width of valve	4mm
ambient temperature range	-15°C - +55°C

Electro add-on components:

- EZ24 electric CLOSE 24VDC
EZ230 electric CLOSE 230V

Connecting diagram electromagnet:

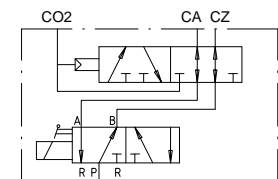


Power input - attracting - DC	-
Power input - attracting - AC	9 VA
Power input - holding - DC	5W
Power input - holding - AC	6VA

Ordering example:

HH5/2 - VVZ - EZ230

Pneumatic symbol:



GRASL Pneumatic-Mechanik GmbH A-3454 Reidling, Europastra 1				Freimatoleranz nach DIN 7168:		Mastab: 1:1	Werkstoff:
						ID - Nr.:	
				Datum	Name	Bezeichnung: Data sheet Hand lever valve HH 5/2 - VVZ with electro add-on component CLOSE	
				Bear.	31.08.2009		
				Gepr.	29.05.2012		
				Norm			
				Type:	HH 5/2 - VVZ		Zeichnung Nr.:
							04.007.DAT.06.02-E
				Zus.	Änderung	Datum	Blatt
				Name	(Urspr.)	(Ers.f.)	BL.
						04.007.DAT.06.01	(Ers.d.)