

Diese Zeichnung ist Eigentum der  
Fa. Grasl GmbH A-3454 Reidling, Europastra 1  
Die Weiterverwendung oder Vervielflti-  
gung ohne unser schriftliches Einver-  
stndnis ist verboten!

**Description of function:**

The hand lever valve HH5/2 is a 5/2 way piston slide valve with mounted priority valve VVAZ for manual controlling the RWA- or ventilation cylinder OPEN / CLOSE.

If there is a pressure on the connection CO2-A which is higher than the min. release pressure, the priority valve VVAZ switch, connect the input CO2-A with the output CA and exhaust the connection CZ at the same time.  
If there is a pressure on the connection CO2-Z which is higher than the min. release pressure, the priority valve VVAZ switch, connect the input CO2-Z with the output CZ and exhaust the connection CA at the same time.  
All ventilation operations are disable as long as the connections CO2-A and CO2-Z aren't exhausted and the priority valve will be reseted with both reset buttons.

**Operation:**

- Manual operation by using the hand lever.  
hand lever up = OPEN  
hand lever down = CLOSE
- Pneumatic operation PRIORITY OPEN / CLOSE by applying the minimum release pressure on CO2-A / CO2-Z .

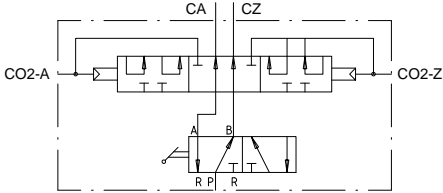
**Installation:**

- Variable mounting position
- Join connections as follows:  
P ..... Compressed air  
CA ..... Pneumatic cylinder OPEN  
CZ ..... Pneumatic cylinder CLOSE  
CO2-A ..... Pneumatic remote control: PRIORITY OPEN  
CO2-Z ..... Pneumatic remote control: PRIORITY CLOSE

**Technical data:**

|                              |               |
|------------------------------|---------------|
| max. operating pressure      | 16bar         |
| min. release pressure by CO2 | 4bar          |
| nominal width of valve       | 4mm           |
| ambient temperature range    | -15°C - +55°C |

**Pneumatic symbol:**



**Ordering example:**

HH5/2 - VVAZ

|   |                      |            |       |                                   |            |               |  |   |  |                  |  |                    |  |
|---|----------------------|------------|-------|-----------------------------------|------------|---------------|--|---|--|------------------|--|--------------------|--|
| GRASL<br>Pneumatic-Mechanik GmbH<br>A-3454 Reidling<br>Europastraße 1 |                      |            |       | Freimaßtoleranz<br>nach DIN 7168: |            |               |  | Maßstab: 1:1  |  | Werkstoff:       |  |                    |  |
|   |                      |            |       |                                   |            |               |  | ID - Nr.:   |  |                  |  |                    |  |
|   |                      |            |       |                                   | Datum      | Name          |  | Bezeichnung:<br><br><b>Data sheet</b><br>Hand lever valve HH 5/2 - VVAZ |  |                  |  |                    |  |
|   |                      |            |       | Bear.                             | 31.08.2009 | Simetzberger  |  |   |  |                  |  |                    |  |
|   |                      |            |       | Gepr.                             | 29.05.2012 | KW            |  |   |  |                  |  |                    |  |
|   |                      |            |       | Norm                              |            |               |  |   |  |                  |  |                    |  |
|   |                      |            |       |                                   |            |               |  | Zeichnung Nr.:  |  |                  |  | Blatt              |  |
|   |                      |            |       | Type:                             |            | HH 5/2 - VVAZ |  |   |  |                  |  | 04.007.DAT.10.02-E |  |
| 02  | VdS Anerkenn., Temp. | 21.05.2012 | SA    |                                   |            |               |  |   |  |                  |  |                    |  |
| 01  | Schriftkopf Englisch | 14.02.2011 | SA    |                                   |            |               |  |   |  |                  |  |                    |  |
| Zus.  |                      | Änderung   | Datum | Name                              | (Urspr.)   |               |  | (Ers.f.)  |  | 04.007.DAT.10.01 |  | (Ers.d.)           |  |