

Diese Zeichnung ist Eigentum der  
Fa. Grasl GmbH A-3454 Reidling, Europastra 1  
Die Weiterverwendung oder Vervielflti-  
gung ohne unser schriftliches Einver-  
stndnis ist verboten!

### Description of function:

The hand lever valve HH5/2 is a 5/2 way piston slide valve with mounted priority valve VVAZ for manual controlling the RWA- or ventilation cylinder OPEN / CLOSE. The valve can be controlled electric CLOSE by an electro add-on component (EA). There is no manual operating possible as long as the add-on component isn't activated.

If there is a pressure on the connection CO2-A which is higher than the min. release pressure, the priority valve VVAZ switch, connect the input CO2-A with the output CA and exhaust the connection CZ at the same time.

If there is a pressure on the connection CO2-Z which is higher than the min. release pressure, the priority valve VVAZ switch, connect the input CO2-Z with the output CZ and exhaust the connection CA at the same time.

All ventilation operations are disable as long as the connections CO2-A and CO2-Z aren't exhausted and the priority valve will be reseted with both reset buttons.

### Operation:

- Manual operation by using the hand lever.  
hand lever up = OPEN  
hand lever down = CLOSE
- Electric operation by dropping the rated voltage to the electromagnet of the add-on component.
- Pneumatic operation PRIORITY OPEN / CLOSE by applying the minimum release pressure on CO2-A / CO2-Z.

### Montage:

- Variable mounting position
- Join connections as follows:  
P ..... Compressed air  
CA ..... Pneumatic cylinder OPEN  
CZ ..... Pneumatic cylinder CLOSE  
CO2-A ..... Pneumatic remote control: PRIORITY OPEN  
CO2-Z ..... Pneumatic remote control: PRIORITY CLOSE

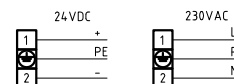
### Technical data:

max. operating pressure	10bar
min. operating pressure by EA	2bar
min. release pressure by CO2	4bar
nominal width of valve	4mm
ambient tempereature range	-15°C - +55°C

### Electro add-on components:

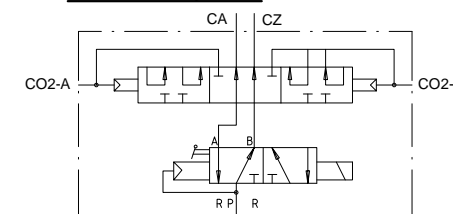
EA24 ..... electric OPEN 24VDC  
EA230 ..... electric OPEN 230V

### Connecting diagram electromagnet:



Power input - attracting - DC	-
Power input - attracting - AC	9 VA
Power input - holding - DC	5W
Power input - holding - AC	6VA

### Pneumatic symbol:



### Ordering example:

HH5/2 - VVAZ - EA230 - LFZ

GRASL Pneumatic-Mechanik GmbH A-3454 Reidling, Europastra 1				Freimatoleranz nach DIN 7168:		Mastab: 1:1	Werkstoff:
				ID - Nr.:			
				Datum	Name	Bezeichnung: <b>Data sheet</b> Hand lever valve HH 5/2 - VVAZ with electro add-on component OPEN/air spring CLOSE	
				Bear. 31.08.2009	Simetzberger		
				Gepr. 29.05.2012	KW		
				Norm			
				Type: HH 5/2 - VVAZ		Zeichnung Nr.:	Blatt
						04.007.DAT.13.02-E	BL.
Zus.	Änderung	Datum	Name	(Urspr.)	(Ers.f.)	04.007.DAT.13.01	(Ers.d.)