

Diese Zeichnung ist Eigentum der
Fa. Grasl GmbH A-3454 Reidling, EuropastraÙ 1
Die Weiterverwendung oder Vervielfälti-
gung ohne unser schriftliches Einver-
ständnis ist verboten!

Description of function:

The hand lever valve HH5/2 is a 5/2 way piston slide valve with mounted priority valve VVAZ for manual controlling the RWA- or ventilation cylinder OPEN / CLOSE. The valve can be controlled electric CLOSE by an electro add-on component (e.g. by a wind and rain control). There is no manual operating possible as long as the add-on component is activated.

If there is a pressure on the connection CO2-A which is higher than the min. release pressure, the priority valve VVAZ switch, connect the input CO2-A with the output CA and exhaust the connection CZ at the same time.
If there is a pressure on the connection CO2-Z which is higher than the min. release pressure, the priority valve VVAZ switch, connect the input CO2-Z with the output CZ and exhaust the connection CA at the same time.
All ventilation operations are disable as long as the connections CO2-A and CO2-Z aren't exhausted and the priority valve will be reseted with both reset buttons.

Operation:

- Manual operation by using the hand lever.
hand lever up = OPEN
hand lever down = CLOSE
- Electric operation by applying the rated voltage to the electromagnet of the add-on component.
- Pneumatic operation PRIORITY OPEN / CLOSE by applying the minimum release pressure on CO2-A / CO2-Z.

Installation:

- Variable mounting position
- Join connections as follows:
P Compressed air
CA Pneumatic cylinder OPEN
CZ Pneumatic cylinder CLOSE
CO2-A Pneumatic remote control: PRIORITY OPEN
CO2-Z Pneumatic remote control: PRIORITY CLOSE

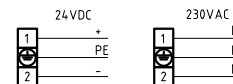
Technical data:

max. operating pressure	10bar
min. operating pressure by EZ	2bar
min. release pressure CO2	4bar
nominal width of valve	4mm
ambient temperature range	-15°C - +55°C

Electro add-on components:

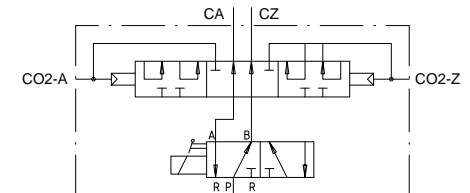
EZ24 electric CLOSE 24VDC
EZ230 electric CLOSE 230V

Connecting diagram electromagnet:



Power input - attracting - DC	-
Power input - attracting - AC	9 VA
Power input - holding - DC	5W
Power input - holding - AC	6VA

Pneumatic symbol:



Ordering example:

HH5/2 - VVAZ - EZ230

GRASL Pneumatic-Mechanik GmbH A-3454 Reidling Europastraße 1				Freimaßtoleranz nach DIN 7168:		Maßstab: 1:1		Werkstoff:		
						ID - Nr.:				
					Datum	Name		Bezeichnung: Data sheet Hand lever valve HH 5/2 - VVAZ with electro add-on component CLOSE		
				Bear.:	31.08.2009	Simetzberger				
				Gepr.:	29.05.2012	KW				
				Norm						
					Type:	Zeichnung Nr.:			Blatt	
02	VdS Anerkenn. Temp.	21.05.2012	SA	HH 5/2 - VVAZ			04.007.DAT.11.02-E			BL.
01	Text	14.02.2011	SA							
Zus.	Änderung	Datum	Name	(Urspr.)			(Ers.f.) 04.007.DAT.11.01		(Ers.d.)	