

Diese Zeichnung ist Eigentum der  
Fa. Grasl GmbH A-3454 Reidling, Europastra 1  
Die Weiterverwendung oder Vervielflti-  
gung ohne unser schriftliches Einver-  
stndnis ist verboten!

**Description of function:**

The valve ZSV-3.10 is a pressure-dependent sequence valve. There is no connection between the valve input CO2 and the output CA as long as the pressure on CO2 is lower than the rated pressure. The valve switch over and connect the input CO2 and the output CA, when the input pressure is higher than the minimum release pressure.  
Reseting the valve, the input CO2 must be completely exhaust.  
Depending on the system size (pipeline lenght), the complete exhaust of the system and thereby the reset of the ZSV-3.10 need some time.

**Operation:**

Pneumatic operation by applying the minimum release pressure at the input CO2.

**Mounting:**

- 1) Variable mounting position
- 2) Join connections as follows:  
CO2 ..... valve input  
CA ..... valve output

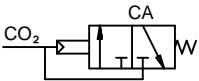
**Technical data:**

rated pressure	5	6	7	8	bar
minimum release pressure	7,3	8,7	10,2	11,6	bar
max. operating pressure	60bar				
connections	1/8"				
nominal width	1mm				
ambient temperature range	-25°C - +110°C				
VdS approval no.	G 503011				

**Application:**

The sequence valve ZSV-3.10 is used for controlling specific system- and equipment components, depending on the pressure (e.g. flaps with ventilation- and RWA-cylinder, where the valve ZSV-3.10 connect to the RWA-cylinder in the RWA-case).

**Pneumatic symbol:**



**Ordering example:**

ZSV-3.10 (rated pressure)

GRASL Pneumatic-Mechanik GmbH A-3454 Reidling Europastraße 1				Freimaßtoleranz nach DIN 7168:				Maßstab: 1:1		Werkstoff:			
								ID - Nr.:					
					Datum	Name		Bezeichnung:  <b>Data sheet</b> Sequence valve ZSV-3.10					
				Bear.	22.09.2009	Simetzberger							
				Gepr.	20.05.2010	KW							
				Norm									
				Type:		ZSV-3.10		Zeichnung Nr.:  04.003.DAT.00.01-E				Blatt	
01	Text		20.05.2010	SA								BL.	
Zus.		Änderung		Datum	Name	(Urspr.)		(Ers.f.)		04.003.DAT.00.00		(Ers.d.)	