

Description of function:

The valve ZSV-BVE is a pressure-depended sequence valve with mounted pressurising valve. The outlet CA is ventilated as long as the pressure on CO2 is lower than the rated pressure. This means that the cylinder can be towed (e.g. through a ventilation actuator). These ventilation also compensate pressure fluctuation, which result from temperature fluctuation, inside the cylinder (to avoid unintended opening of the hook locking device).

The valve switch over and connect the input CO2 and the output CA, when the input pressure is higher than the minimum release pressure.

Resetting the valve, takes place by completely exhausting the CO2 input.

Depending on the system size (pipeline lenght), the complete exhaust of the system and thereby the reset of the ZSV need some time.

Operation:

Pneumatic operation by applying of minimum release pressure at the input CO2.

Mounting:

1) Connections:

CO2 valve input

CA valve outlet

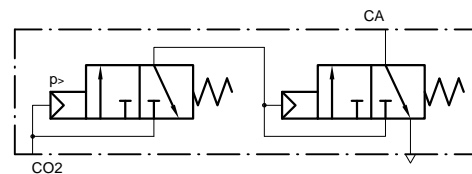
2) Variable mounting position. Make sure that the required place for the control slider is available.

3) For our 1/8" connection threads we recommend to use screw connections with taper thread and to seal these in position using a liquid sealant (e.g. Loctite 243). It must be ensured that the liquid sealant is applied to the external thread.

Technical Data:

rated pressure	5	6	7	8	bar
min. release pressure	7,3	8,7	10,2	11,6	bar
max. operating pressure	60bar				
nominal width of valve (exhaust)	4mm				
nominal width of valve (interconnect)	1mm				
ambient temperature range	-25°C - +80°C (2h 110°C)				
VdS approval no.	G 503011				

Circuit diagramm:



Ordering example:

ZSV-BVE (rated pressure)

Tolerance	Scale	1:1	Material	
Created Simetzberger	Sheet 1/2	Format A3	Title Sequence valve ZSV-BVE	Document Style Data sheet
Approved GH	Issue Date 09.12.2015			Document State Valid
Grasl				Document Number 04.026.DAT.00.02-E
Pneumatic Mechanik GmbH	QM FO 05.24.0			