

Description of function:

The electric window locking device is a locking device, which open the locking hook and release the locking bolt by control "open".
The control "close" is't allowed before the locking bolt is in the home position of the window locking device again.

Technical data:

static locking force	1250N
rated voltage	24VCD
no-load current	0,5A
max. breaking current (overload cut-off)	1,1A
protection class according to DIN EN 60 529	IP54
opening time under full load	ca. 5sek
ambient temperature range	-20°C - +60°C
connection	light grey silicone connection cable (lenght 2,5m)

Technical information:

Take care that the upstream control has a OPEN-CLOSE function. If the window locking device is used in connection with a electric 24V-actuator, an extra follow-up control type FGS shall be provided. Take also care, that the upstream control has a Auto-CLOSE function (specifically in connection with devices without ventilation function).

Rated current:

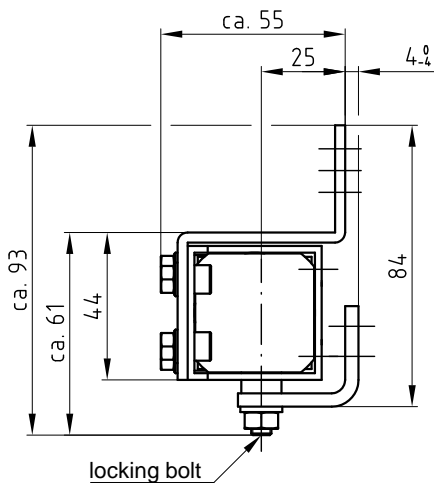
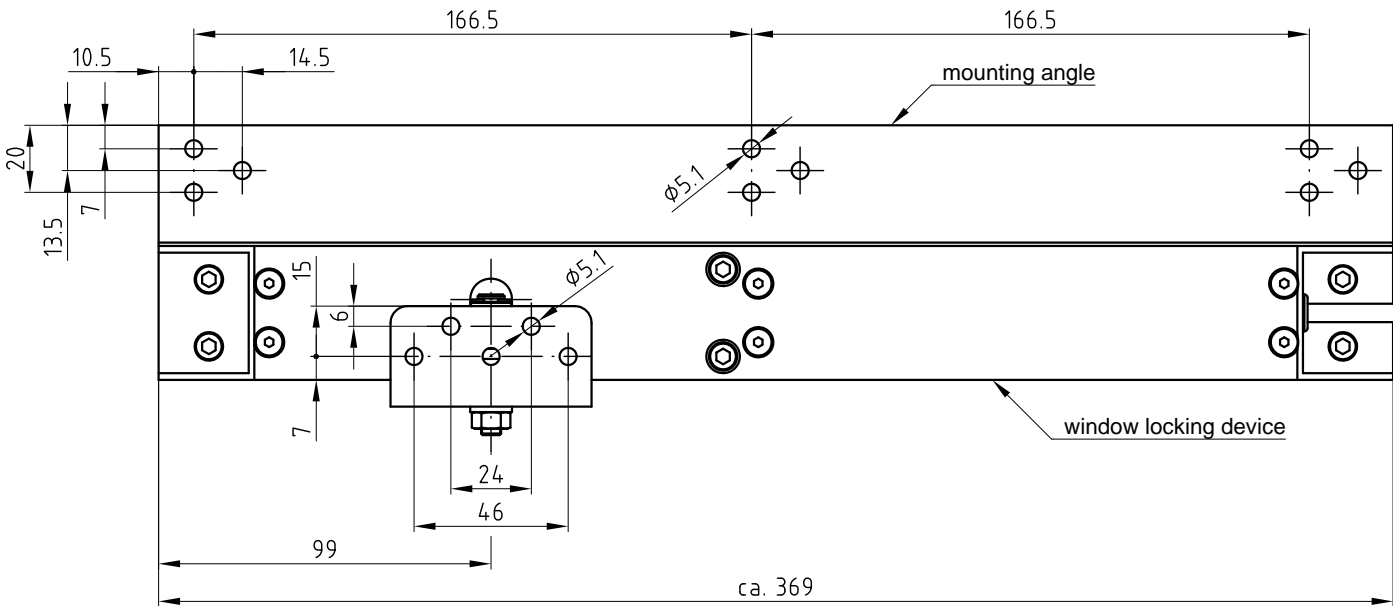
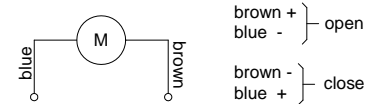
The rated current depends on the locking force - see table

locking force	rated current
1250N	0,9A
1000N	0,9A
750N	0,8A
500N	0,7A

Scope of supply:

The locking bolt is NOT included in the scope of supply and must be ordered separately!

Circuid diagramm:



Diese Zeichnung ist Eigentum der
Fa. Grasl GmbH A-3454 Reidling, Europastraß 1
Die Weiterverwendung oder Vervielfälti-
gung ohne unser schriftliches Einver-
ständnis ist verboten!

GRASL Pneumatic-Mechanik GmbH A-3454 Reidling Europastraße 1				Freimaßtoleranz nach DIN 7168:				Maßstab: 1:1		Werkstoff:	
								ID - Nr.:			
					Datum	Name		Bezeichnung: Data sheet Electric window locking device EFR 1.12 for outward opening windows			
				Bear.	07.04.2009	Simetzberger					
				Gepr.	14.06.2012	KW					
05	Schutzart	12.06.2012	SA	Norm							
04	Technische Hinweise	18.08.2011	SA								
03	Schutzart	04.11.2010	SA	Type:	EFR		Zeichnung Nr.:		Blatt		
02	Text, Englisch	09.07.2010	SA								
01	Diverse Änderungen	01.02.2010	SA								
Zus.	Änderung	Datum	Name	(Urspr.)			(Ers.f.) 03.008.DAT.01.04		(Ers.d.)		
										BL.	